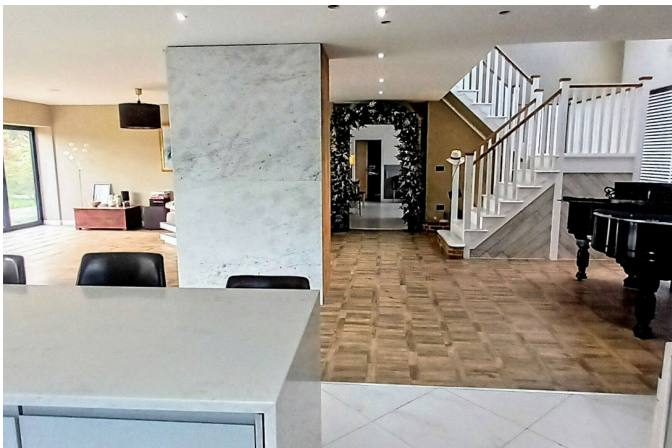


Your Logo

## 2, Meadow View The Forstal, Preston

Offers In Region Of £1,200,000

🏠 5 🚗 4 🛋️ 4



# Your Logo

- Bespoke Contemporary Design
- Open plan kitchen/living area
- 2 Ensuited
- Double Garage with accommodation above
- Gated Entrance
- 4/5 Double Bedrooms
- 4 Reception rooms
- Large Garden
- Rural location
- please quote re MJ1042



Whilst every attempt has been made to ensure the accuracy of the floorplan contained here, measurements of doors, windows, rooms and any other items are approximate and no responsibility is taken for any error, omission or mis-statement. This plan is for illustrative purposes only and should be used as such by any prospective purchaser. The services, systems and appliances shown have not been tested and no guarantee as to their operability or efficiency can be given.  
Made with Metropix ©2024

please quote ref MJ1042

Situated in the highly sought after village of Preston. This stunning 4/5 bedroom detached house offers exceptional space and versatile accommodation for the whole family. Located within a rural setting the property offers a blend of tranquillity and convenience with local amenities nearby as well as local schools and excellent transport links into London.